



Door Opening is 1740mm
x 2400mm high

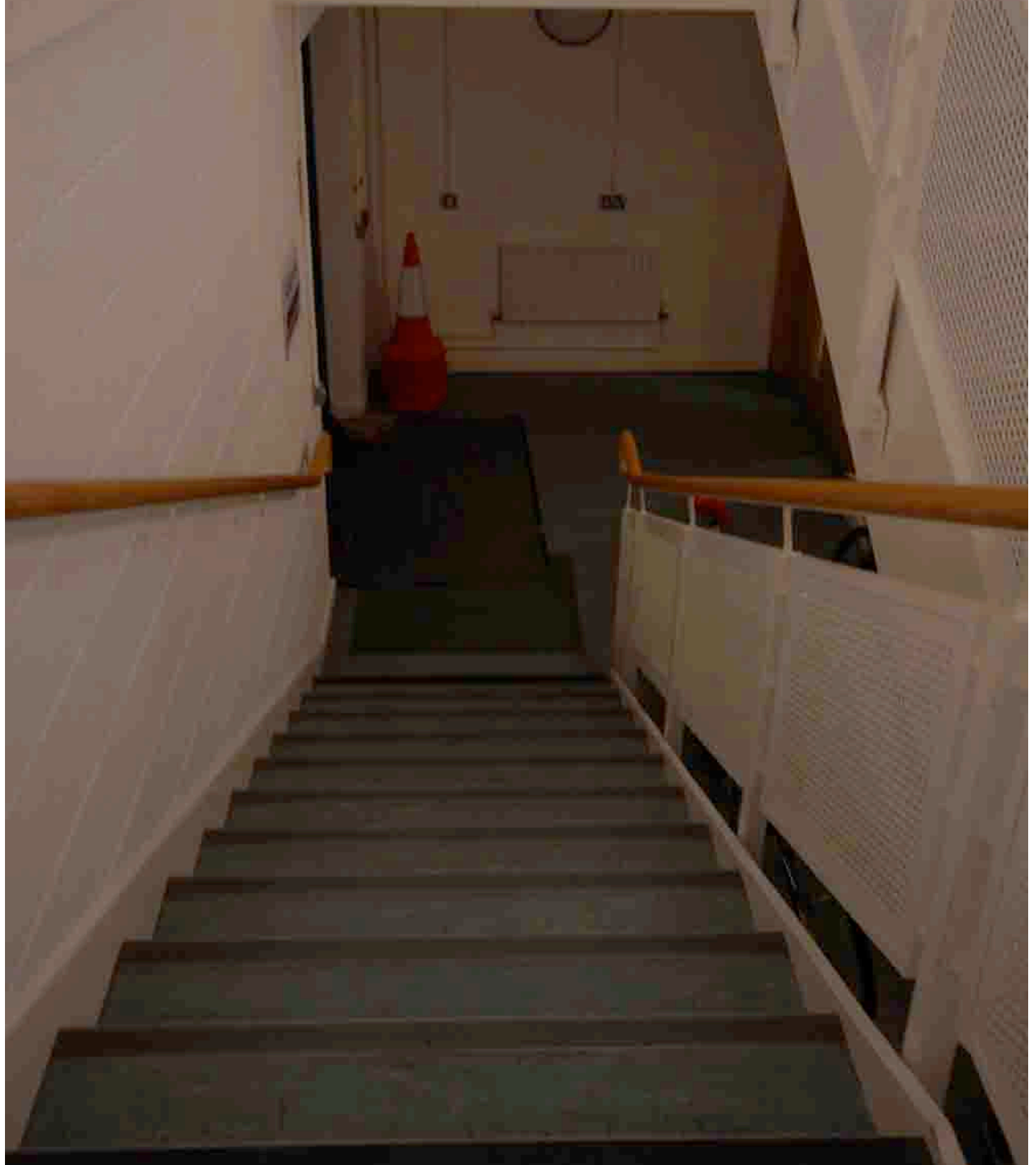
Load In from
Exterior to Interior.



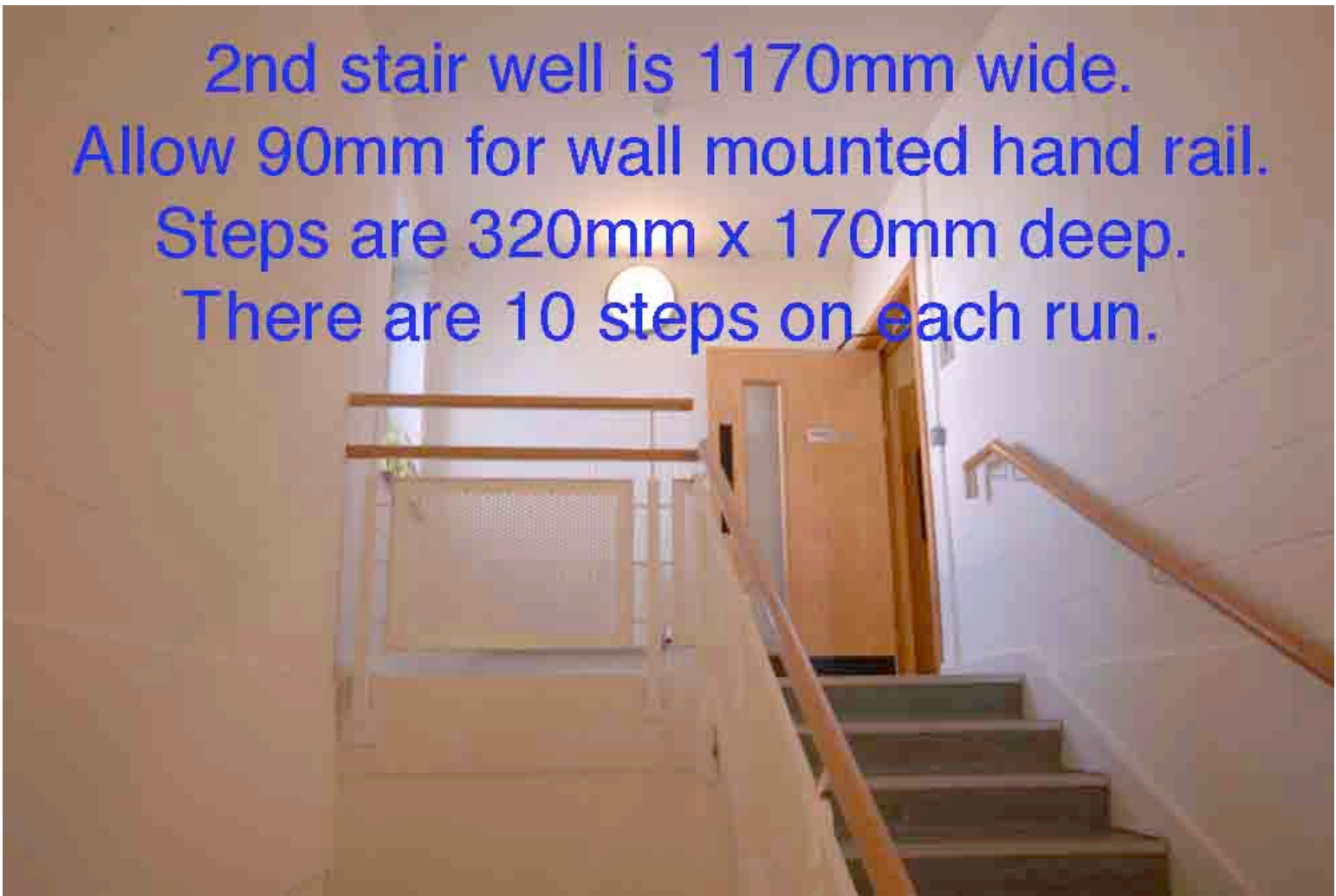
All large items go upstairs by 1 flight.

Items can be placed on trolleys & brought to the studio
by use of public lift at front.

Stair well is 1170mm wide.
Allow 90mm for wall mounted
hand rails.
Height to low ceiling is 2670mm.



2nd stair well is 1170mm wide.
Allow 90mm for wall mounted hand rail.
Steps are 320mm x 170mm deep.
There are 10 steps on each run.



Roof is 4570mm high from middle landing.
Allow 90mm for wall mounted hand rails
Step dimensions are 320mm x 170mm.
There are 10 x steps on each run.

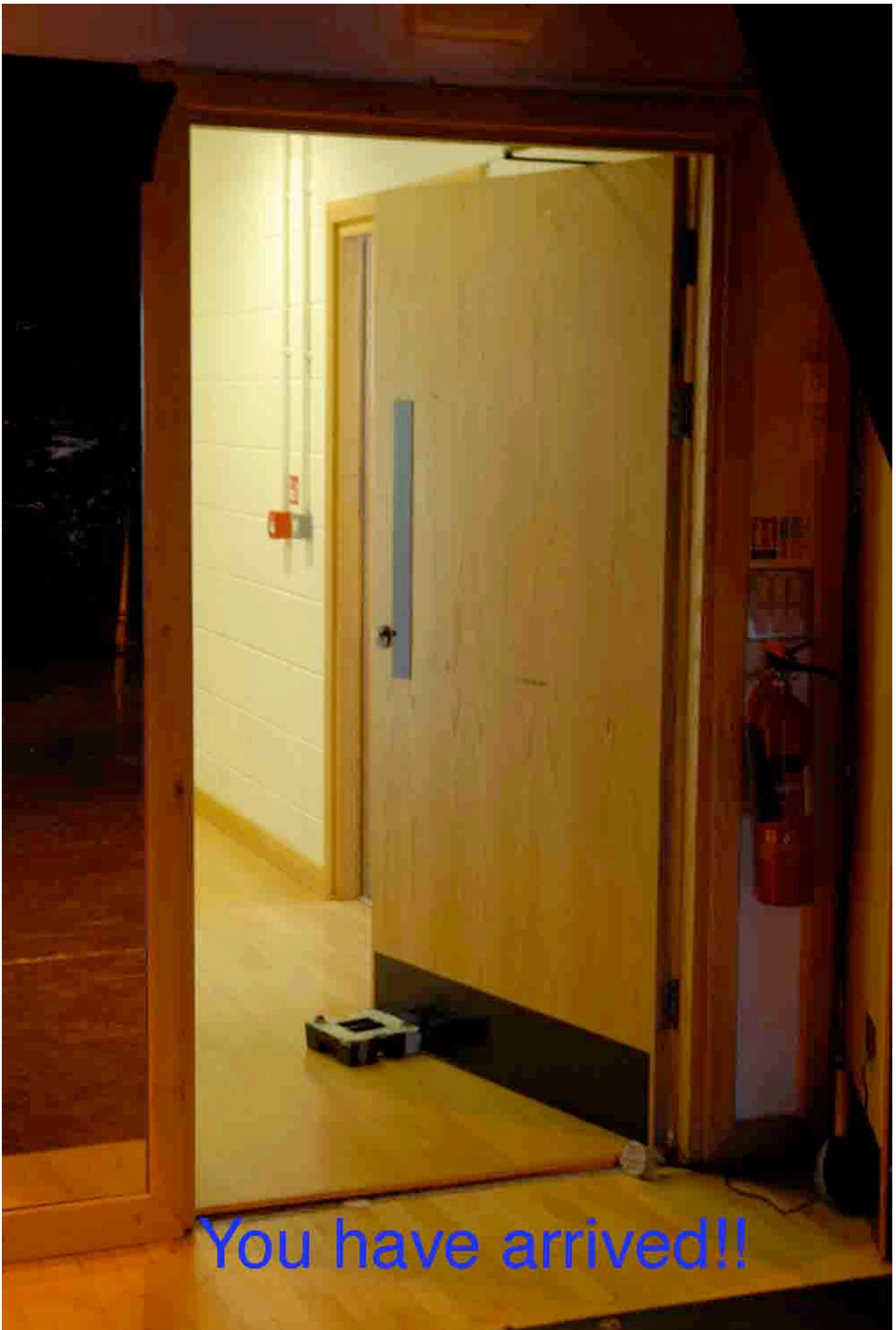




Scenery comes through door on left.
Size of door into studio on top is
1000mm wide x 2030mm high.



Door from stair well is 1000mm wide x
2010mm wide.
Door on right is direct into studio.
All dimensions are maximums available.



You have arrived!!