



draíocht

# Room Hire

We look forward to welcoming you

## About Us

At Draíocht, our work goes far beyond our programme of events. Throughout the year, we help people of all ages to make space for the arts in their lives. Working collaboratively with artists of all disciplines, we journey with thousands of people to enhance their lives through arts events, projects and initiatives. People of all ages are entertained as audience members, participate in a wide range of programmes and create their own work, giving their voice a platform. We engage and support local, national and international artists of all disciplines in the presentation and creation of work.

We bring the public and artists together and in that space, **Magic Happens.**

We are a Registered Charity in Ireland (CHY12696), so when you book with us you're supporting the work we do.





At Draíocht we have three spaces for corporate hire; **The Main Auditorium**, **The Studio** and **The Workshop Room**. Whether it's team building, meetings, presentations or conferences we look forward to welcoming you.

Take A Virtual Tour



## The Workshop Room

A large, bright, airy room with hard lino floor, black out blinds and natural light. located on our ground floor beside our café it's the perfect meeting spot.

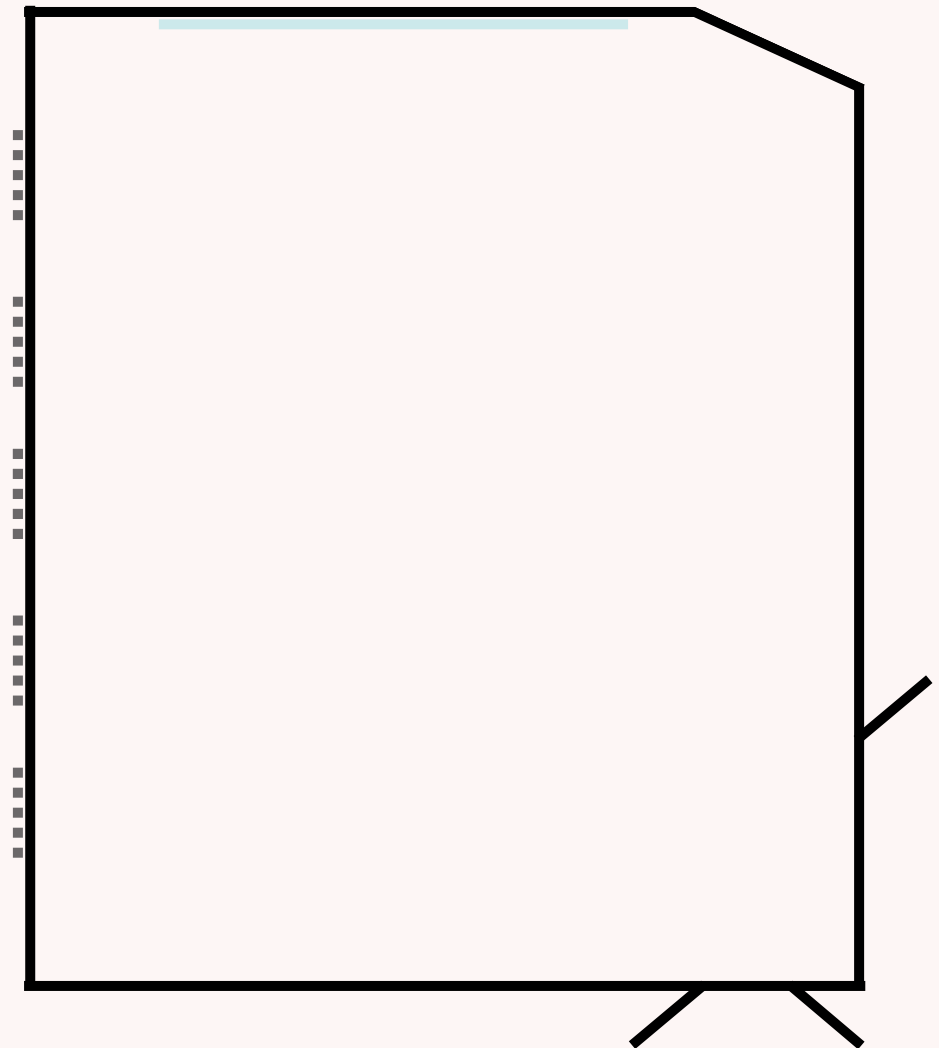
Capacity: 70 standing, 50 seated

Dimensions: 9m x 10.5m

Seating Arrangements:

- Theatre
- Classroom
- Boardroom
- Cabaret
- U-shaped (with or without tables)

Floorplan







## The Studio

This room can be divided into two spaces, the performance side and the small auditorium, depending on requirements.

### *Small auditorium*

Eight rows of tiered, cushioned seating.

Capacity: 92 seated

Dimensions: 13m x 11m

### *Performance side*

Large room with Junkers shock absorbent floor suitable for dance with mirrors along one side of room.

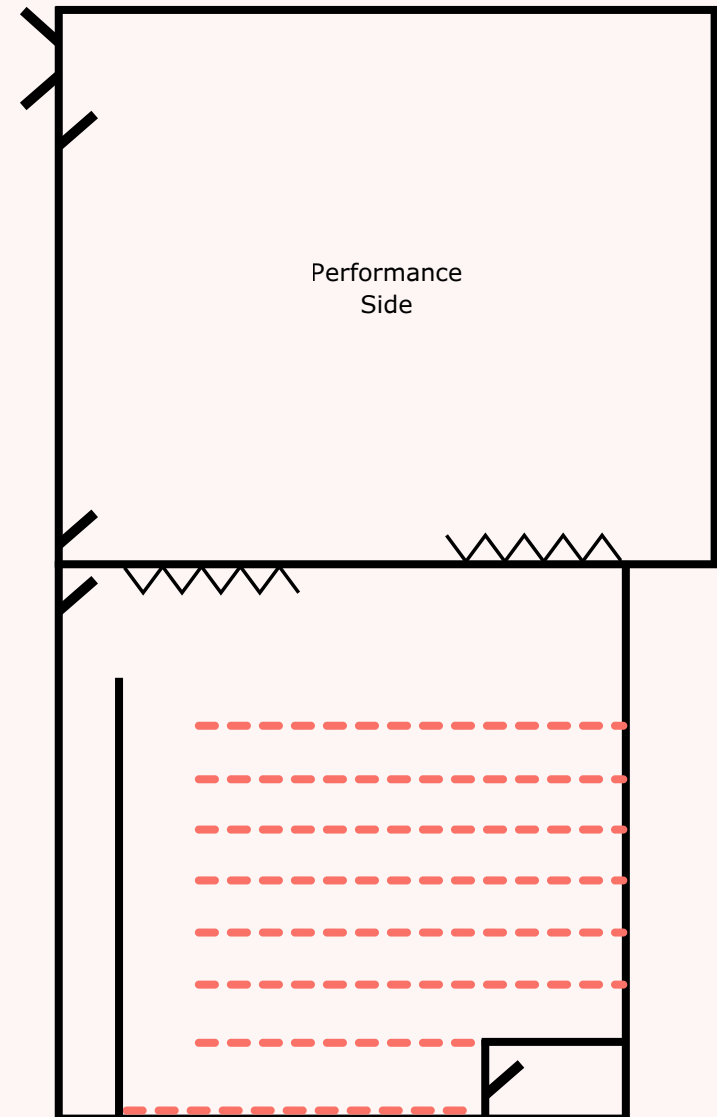
Capacity: 72 standing

Dimensions: 13m x 11m

Seating Arrangements:

- Theatre
- U-shaped

Floorplan







# The Main Auditorium

Large auditorium with tiered seating and a large stage.

Capacity: 286 seated / 500 standing

Dimensions:

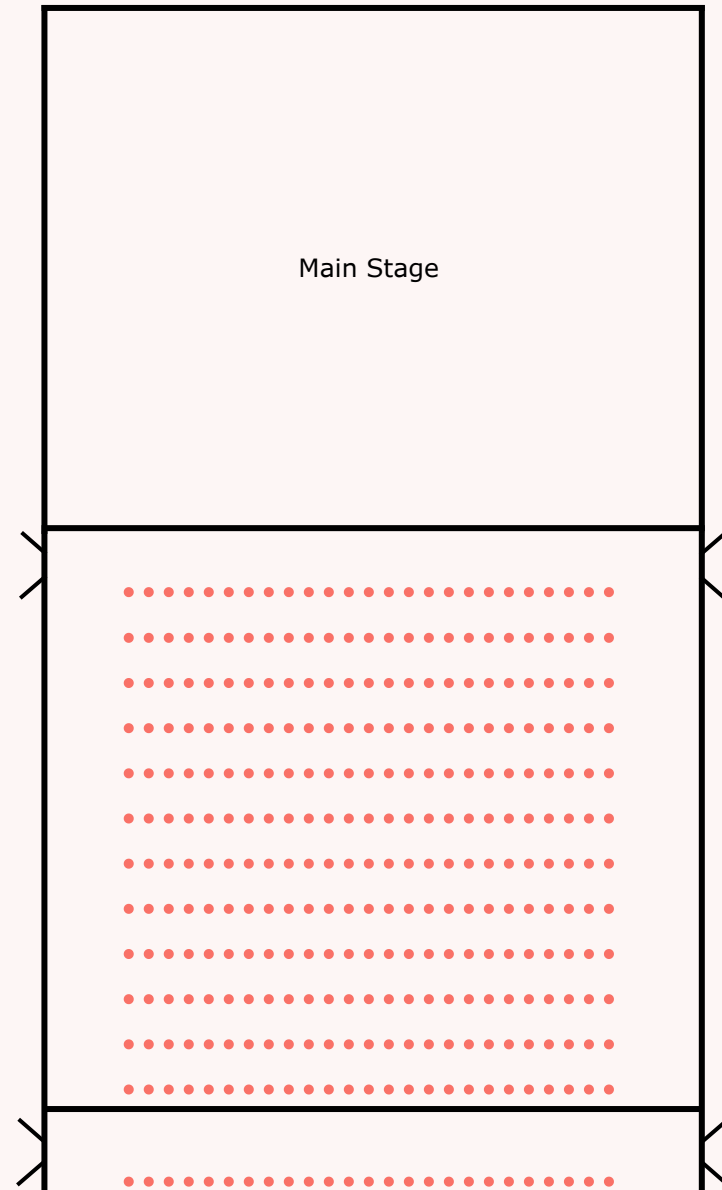
- Auditorium: 15m x 15m,
- Stage: 14.95m x 12m

Seating Arrangements:

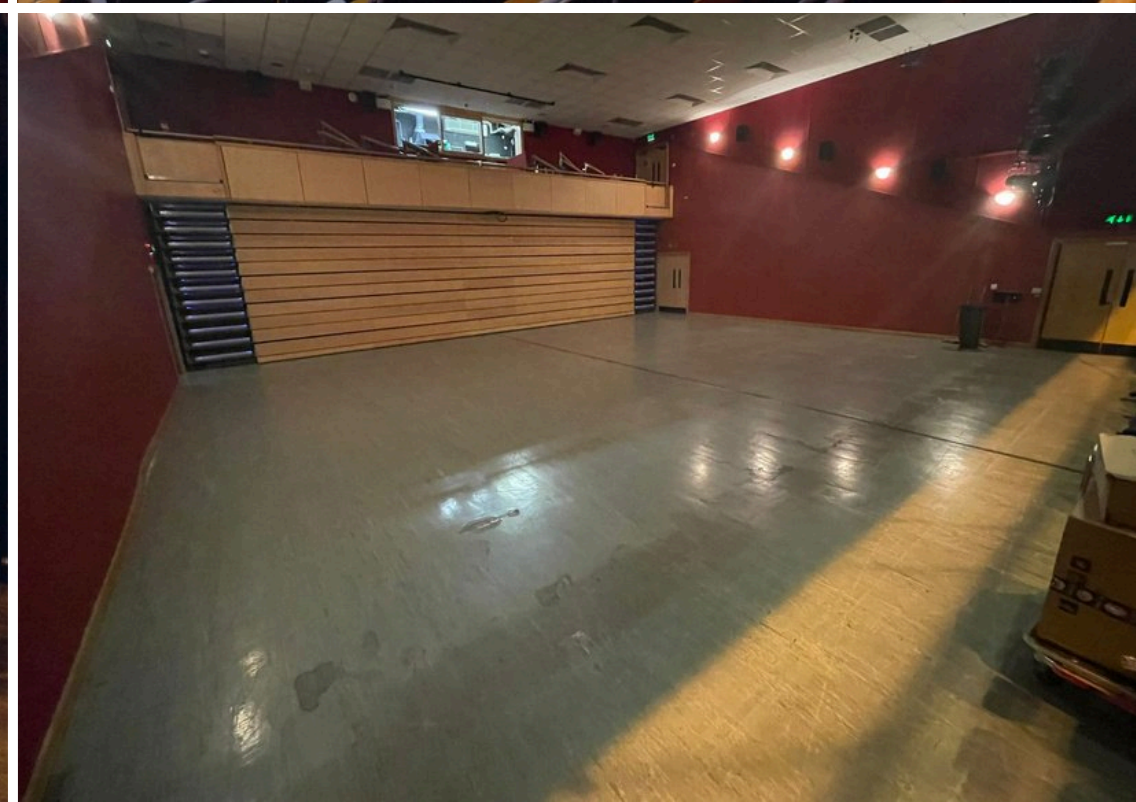
- Theatre
- U-shaped

\*Price available on Request

Floorplan







## Amenities

- 60 Chairs
- 8 Trestle Tables
- 1 Flip Chart with paper and pens
- TV, DVD and video
- Playback Sound Equipment
- Extension Cables
- Projector
- Lectern
- Portable PA
- Photocopying facilities are provided at a cost of 25c per A4 page, 50c per A3 page b/w or colour.
- Operators for Sound, Lighting or AV equipment can be provided at additional cost to the Hirer.

## Access

All spaces are fully accessible, with level access and adapted toilets. The Main Auditorium is fitted with A.F.I.L. hearing assistance system. Level access parking spaces are available at the front of the building. There is lift access to our First Floor Gallery and Studio Theatre for wheelchair users and buggies. There are further access resources available in the foyer for visitors.



## Rate Card

We're open 10am - 6pm Monday to Saturday

Room Hires may take place from 10.00am - 5.30pm

Room	Per Hour	Half Day	Full Day	Out of Hours	Sunday
Workshop	€50	€100	€200	€100*	€100**
Studio	€50	€100	€200	€100*	€100**
Main Auditorium	€100	€200	€400	€125	€125**

\* Minimum 2-hour charge in the evening Monday - Saturday

\*\* Minimum 4-hour charge Sunday or Bank Holidays

### Rates Explained

Half Day | Anytime from 10am - 2pm or 2pm - 6pm including set-up and take-down

Full Day | From 10am - 6pm including set-up and take-down

Out of Hours | Charged for time before 10am or after 6pm

## Our Café | Koffee + Kale

Crafting nature's goodness into delicious food and coffee...

Our café can cater for afternoon tea or lunch for groups of 10 - 80 people.  
If you're interested please let us know, we will provide a quote.

Most dietary restrictions can be facilitated please let us know your requirements.

Indicative packages are below:

Tea, Coffee & Pastries, Scones and biscuits

Soup & A selection of Sandwiches



Please note we do not facilitate external caterers on the premises



## Getting Here

Draíocht is located in West Dublin in Blanchardstown, Dublin 15, and is part of the Blanchardstown Shopping Centre complex.

### Location

Draíocht

The Blanchardstown Centre

Blanchardstown

Dublin 15

D15 RYX6

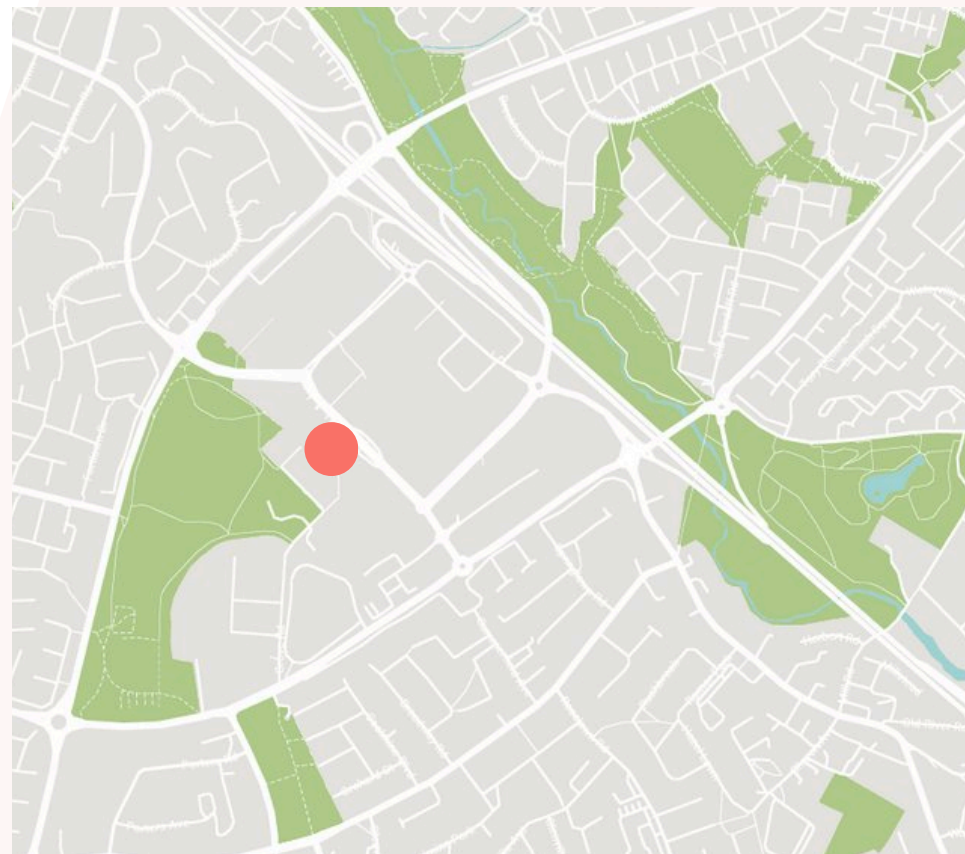
### Directions

Travelling by Car

Travelling by Bus

Coach Drop Offs

Taxis



### Parking

There are over 7,000 free parking spaces available for customer use in The Blanchardstown Centre including a number of disabled parking spaces, ten of which are in front of our entrance.

# draíocht

## **We look forward to welcoming you soon**

To book one of Draíocht's spaces for a corporate event, like a meeting, interview, or conference please contact:

Emma Áine O'Leary, Marketing Assistant & Corporate Hires Coordinator  
tel: 01 809 8024 or email [marketing@draiocht.ie](mailto:marketing@draiocht.ie)

To book one of Draíocht's spaces for an evening performance or weekly performances please contact:

Emer McGowan, Director  
tel: 01 809 8027 or email [emer@draiocht.ie](mailto:emer@draiocht.ie)